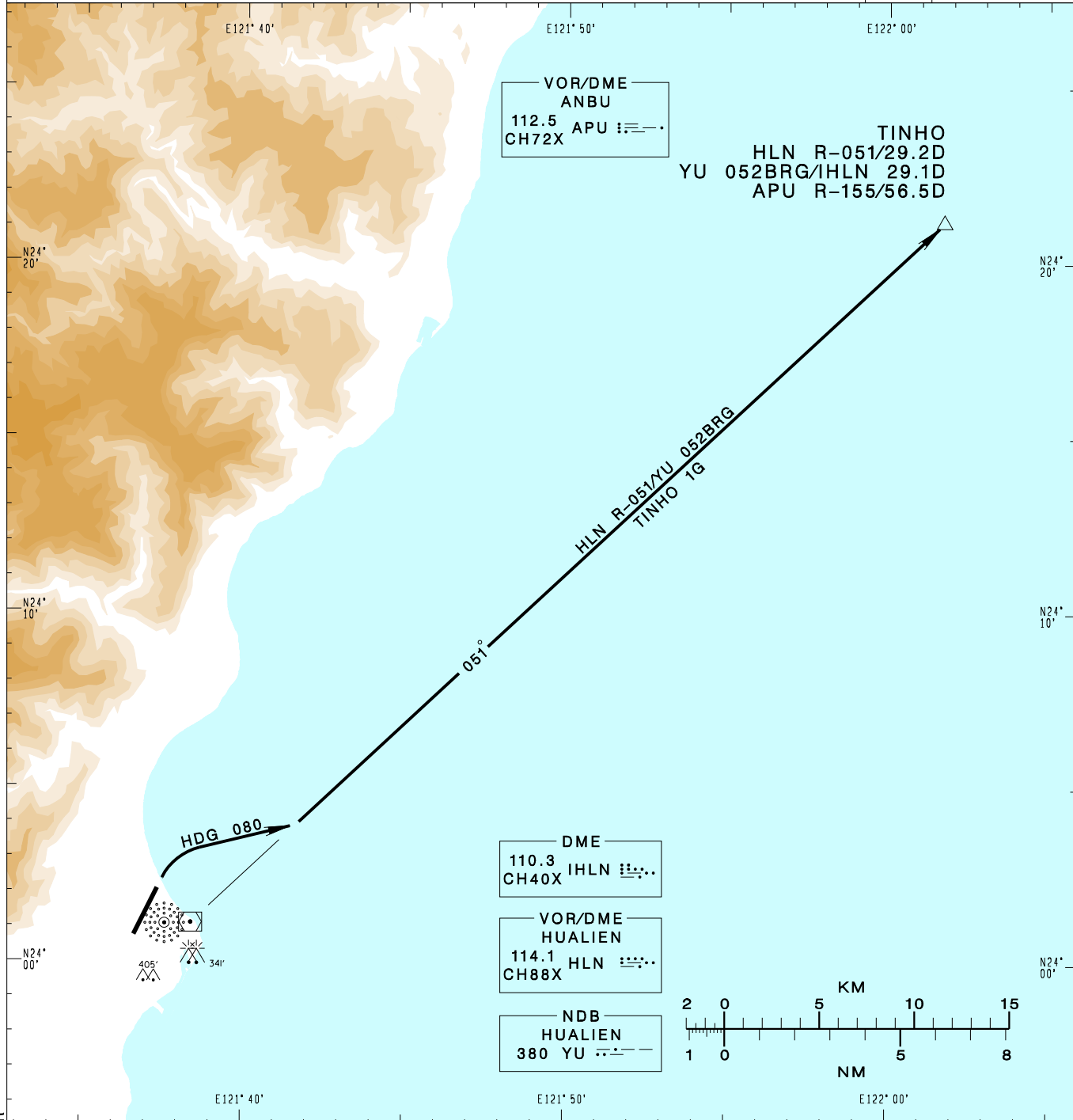


**花蓮機場**  
HUALIEN AD

RCYU SID  
TINHO 1G(RWY03)

TAIPEI APP 124.0 119.1 330.2 276.8				HUALIEN TWR 118.1 126.18 236.6				VAR 4°W 	MSA HLN VOR 25NM
Apt Elev: 51'				Trans Level: FL130		Trans Alt: 11,000'			
BEARINGS ARE MAGNETIC; DISTANCES ARE NAUTICAL MILES; ELEVATIONS, HEIGHTS IN FEET									



CHANGES: NEW PAGE NUMBER

**TINHO ONE GOLF DEPARTURE**

After departure, turn right HDG 080 to track HLN R-051/YU 052BRG to TINHO to join B591.

**NOTE**  
Caution high terrain west of the airport.